

113. THE EXPANSION JOINTS USED IN ROOF AND FLOOR SHALL BE FINISHED IN SUCH AS TO OBTAIN AN EFFECTIVE SEAL AGAINST PENETRATION OF WATER. THE JOINT SHALL SUITABLY TREATED FOR WATER PROOFING (REF FIG. 14,15,16 AND 17).

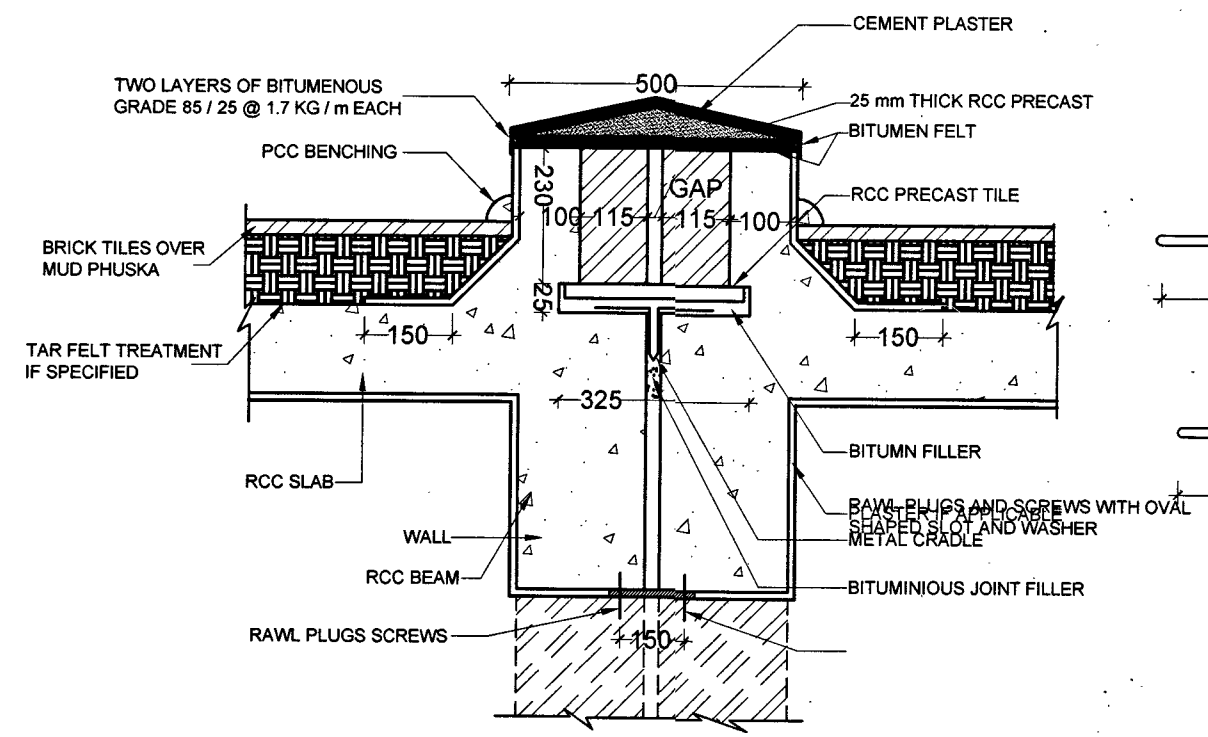


FIG.-52: EXPANSION JOINT USING R.C.C. PRECAST TILES OVER JOINT

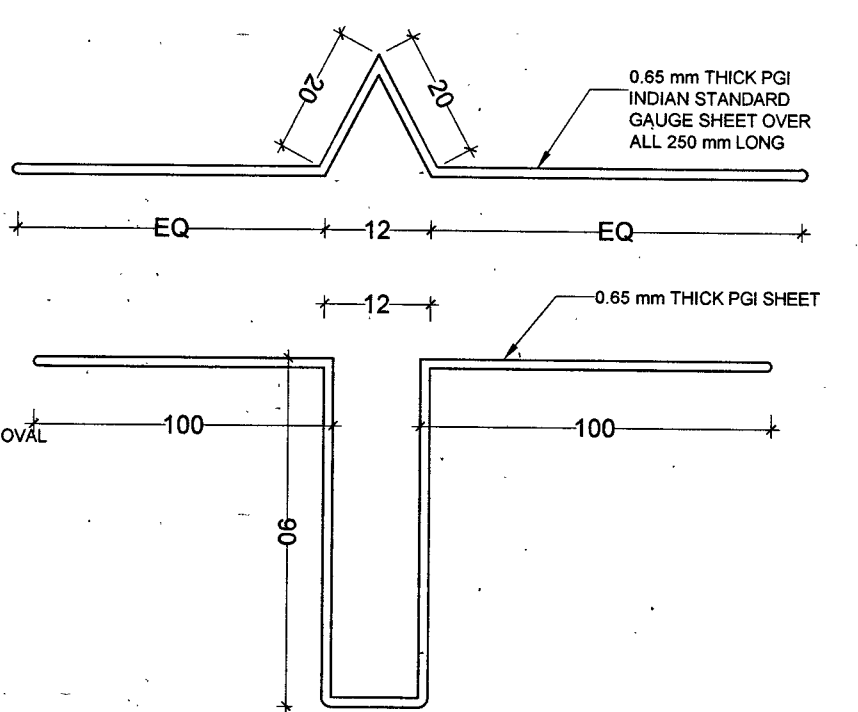


FIG.- 53: DETAIL OF METAL CRADLES

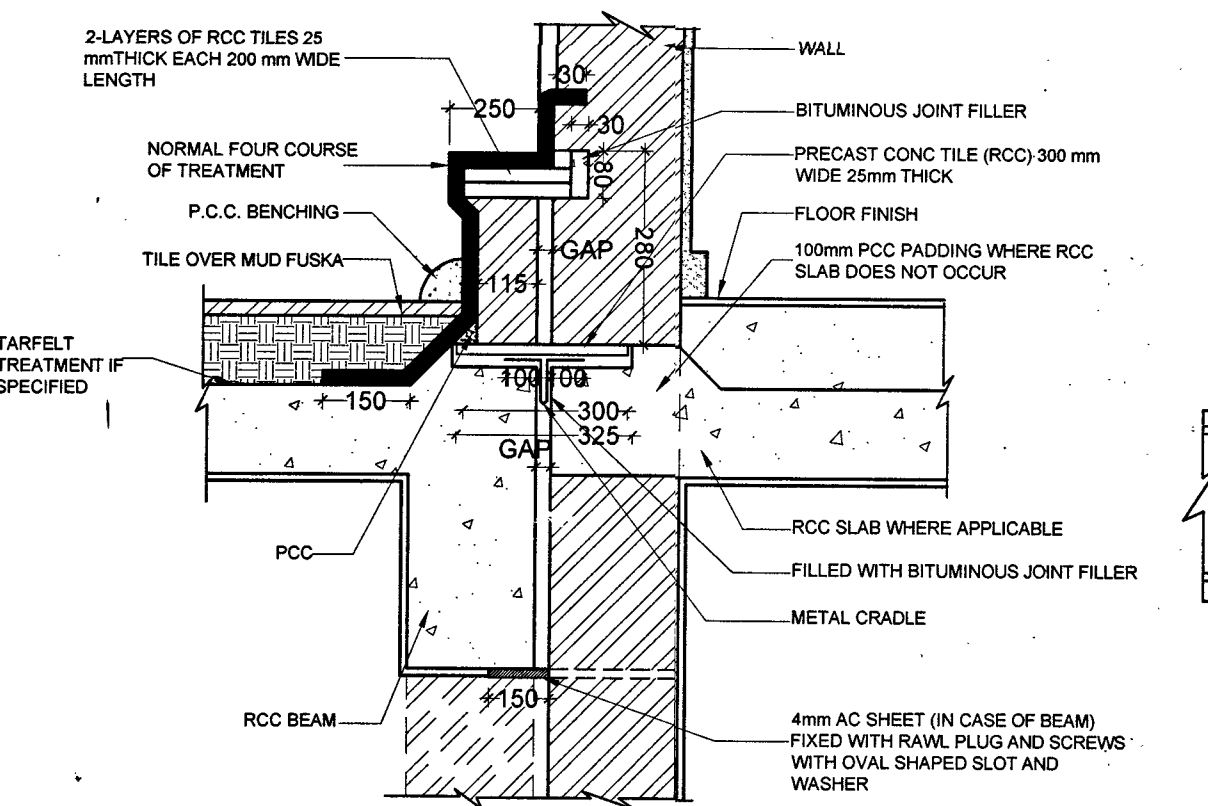


FIG.- 54: DETAIL OF SEPARATION JOINT AT ROOF BY THE SIDE OF WALL

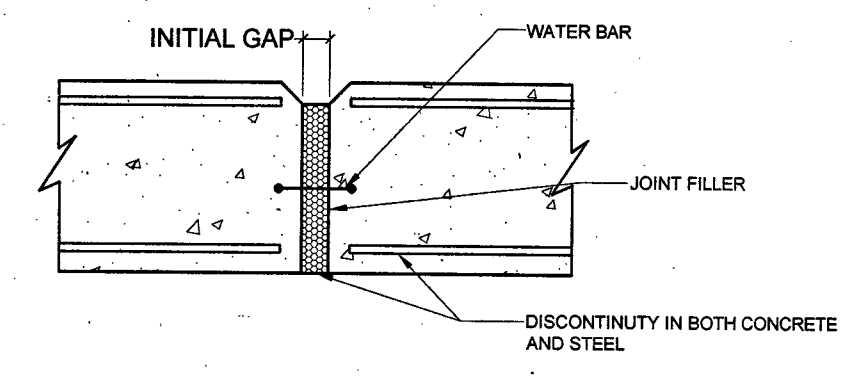


FIG.- 55: EXPANSION JOINT SUBJECT TO WATER PRESSURE

SNO.	DATE	DESCRIPTION	DY.DIR	DIR(DES)
				INITIAL
REVISIONS				
DATE	30 MAY 2024	CHIEF ENGINEER JALANDHAR ZONE TYPICAL R.C.C. DETAILS		
DRN	POOJA T			
TCD				
CKD				
SCALE	AS SHOWN	EXPANSION / CRUMPLE JOINTS, SEPARATION JOINT AND DETAIL OF METAL CRADLES		
SHT. SIZE	A3			
AAD (DESIGN)		DRG. NO.	SHEET NO.	
DIR (DESIGN) FOR CHIEF ENGINEER		DRG NO CEJZ / STD- 422/24	34/34	